



# HOEKSTRA & ASSOCIATES, INC.

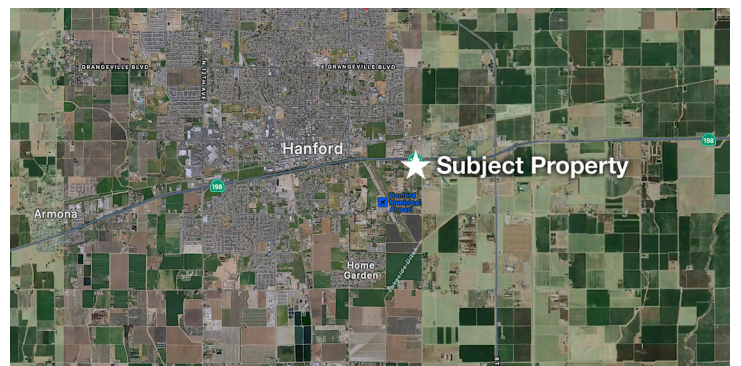
FARMLAND, COMMERCIAL, RESIDENTIAL REAL ESTATE

**FOR SALE**

**\$875,000**

**Lowrie Yard**

**7.17 Acres**



**Dan Hoekstra**  
(805) 839-8292 cell  
dan@hoekstra.land  
CalBRE-01942198

**Sean Barajas**  
(559) 805-0179 cell  
sean@hoekstra.land  
CalBRE-02157022

**AGRICULTURAL REAL ESTATE PROFESSIONALS**

**www.Hoekstra.land**



# HOEKSTRA & ASSOCIATES, INC.

FARMLAND, COMMERCIAL, RESIDENTIAL REAL ESTATE

**FOR SALE**

**\$875,000**

**Lowrie Yard**

**7.17 Acres**

## LOCATION

The subject property is located at 10378 9th Ave, Hanford, CA 93230. It is just South of Highway 198 on the west side of 9th Ave. The subject property is just 1 mile west of Highway 43 and less than a mile east of Hanford Municipal Airport.

## DESCRIPTION

The property has a 936 sf office that was built in 1983, with a 6' chain link fence and gated entry. There is a 1600 sf shade/carport adjacent to the office.

## PARCEL #'S

Kings County APN: 016-043-042 & 043

## ZONING

C-S - Planned Service Commercial  
(current use is agricultural related truck parking)

## WATER & IRRIGATION

There is a domestic well for the office and yard. The office is also on septic system.

## PRICE/TERMS

\$875,000 cash at close of escrow.





# HOEKSTRA & ASSOCIATES, INC.

FARMLAND, COMMERCIAL, RESIDENTIAL REAL ESTATE





# HOEKSTRA & ASSOCIATES, INC.

FARMLAND, COMMERCIAL, RESIDENTIAL REAL ESTATE

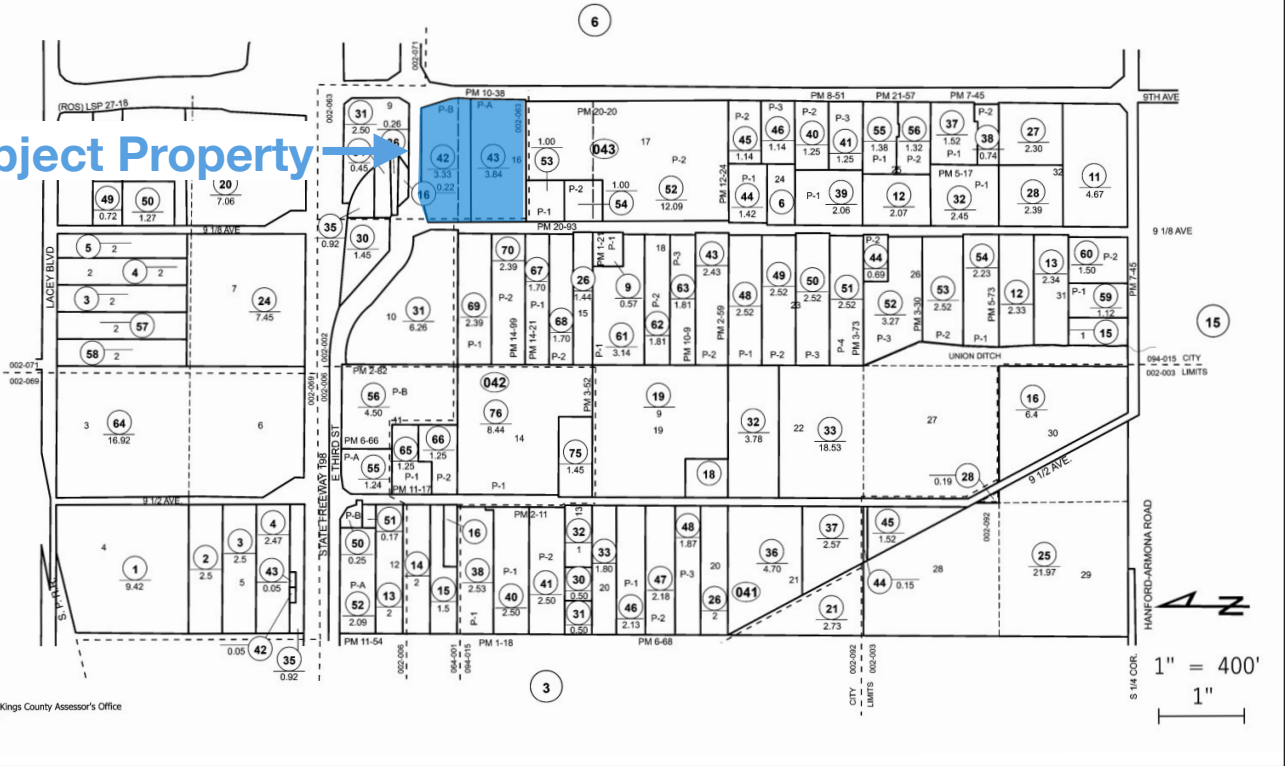
## ASSESSORS MAP

THIS MAP IS FOR ASSESSMENT PURPOSES ONLY.  
IT IS NOT TO BE CONSTRUED AS PORTRAYING  
LEGAL OWNERSHIP OF DIVISIONS OF LAND FOR  
PURPOSES OF ZONING OR SUBDIVISION LAW.  
AUGUST 2023

### KINGS COUNTY ASSESSOR'S MAP LUCERNE COLONY E 1/2 OF SEC. 31-18-22

16-04

**Subject Property** →



Copyright © 1997, Kings County Assessor's Office  
All Rights Reserved