



HOEKSTRA & ASSOCIATES, INC.

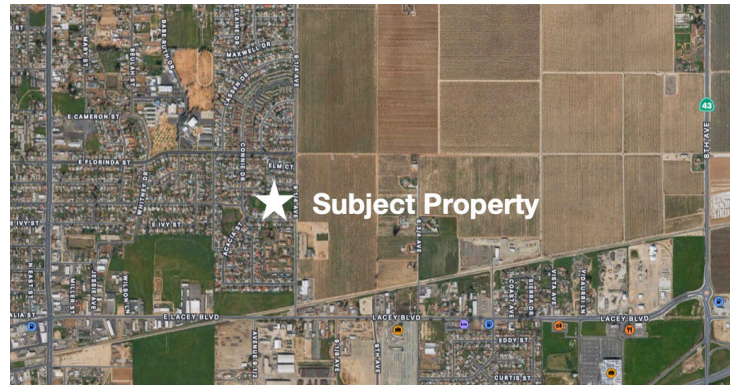
FARMLAND, COMMERCIAL, RESIDENTIAL REAL ESTATE

FOR SALE

\$399,000

Hanford Residential Cul-De-Sac

3.71 Acres



Dan Hoekstra
(805) 839-8292 cell
dan@hoekstra.land
CalBRE-01942198

Russell Waymire
(559) 977-6000 cell
russ@hoekstra-associates.com
CalBRE-01763629

Sean Barajas
(559) 805-0179 cell
sean@hoekstra.land
CalBRE-02157022

Jaime Martinez
(559) 772-6101 cell
jaime@hoekstra.land
CalBRE-01971583

AGRICULTURAL REAL ESTATE PROFESSIONALS

www.Hoekstra.land



HOEKSTRA & ASSOCIATES, INC.

FARMLAND, COMMERCIAL, RESIDENTIAL REAL ESTATE

FOR SALE

\$399,000

Hanford Residential Cul-De-Sac

3.71 Acres

LOCATION

Kenn Circle, Hanford CA 93230

DESCRIPTION

Potential for Multi-unit development. This opportunity is 2 open lots ready for development situated in a cul-de-sac in the Hye Park subdivision of Hanford. The subject property is located within the Hanford city limits and is zoned residential with many options for development. Lot 101 is 1.4+/- acres located on the west side of Kenn Cir and Lot 102 is 2.31+/- acres located on the east side of Kenn Cir. These parcels are adjacent to single family residence and 9 1/4 avenue.

Buyer to verify all pertinent facts with the City of Hanford.

PARCEL #'S

Kings County APN's: 014-472-001 & 014-473-006

ZONING

R-L-5: Residential Use

PRICE/TERMS

\$399,000 cash at close of escrow



HOEKSTRA & ASSOCIATES, INC.

FARMLAND, COMMERCIAL, RESIDENTIAL REAL ESTATE





HOEKSTRA & ASSOCIATES, INC.

FARMLAND, COMMERCIAL, RESIDENTIAL REAL ESTATE

ASSESSORS MAP

