



# HOEKSTRA & ASSOCIATES, INC.

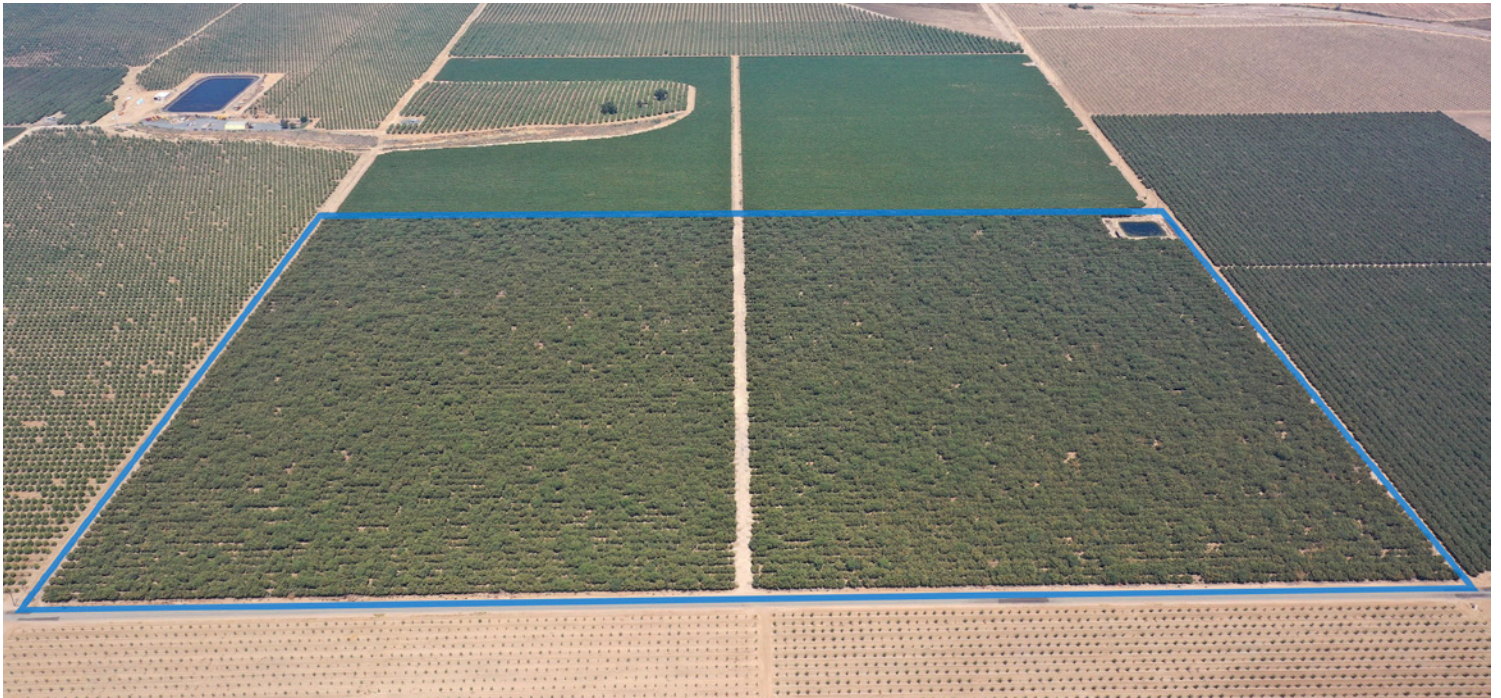
FARMLAND, COMMERCIAL, RESIDENTIAL REAL ESTATE

**FOR SALE**

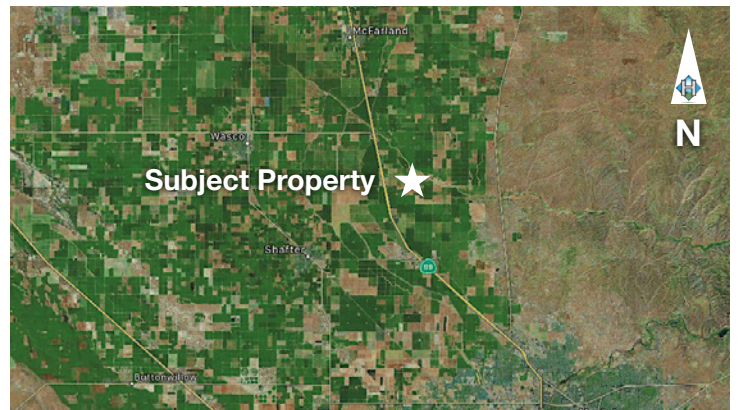
**\$3,774,240**

**Kimberlina Pistachios**

**104.84 Acres**



**PRICE REDUCED**



**Dan Hoekstra**  
(805) 839-8292 cell  
dan@hoekstra.land  
CalBRE-01942198

**Russell Waymire**  
(559) 977-6000 cell  
russ@hoekstra-associates.com  
CalBRE-01763629

**Sean Barajas**  
(559) 805-0179 cell  
sean@hoekstra.land  
CalBRE-02157022

**Jaime Martinez**  
(559) 772-6101 cell  
jaime@hoekstra.land  
CalBRE-01971583

**AGRICULTURAL REAL ESTATE PROFESSIONALS**

**www.Hoekstra.land**



# HOEKSTRA & ASSOCIATES, INC.

FARMLAND, COMMERCIAL, RESIDENTIAL REAL ESTATE

**FOR SALE**

**\$3,774,240**

**Kimberlina Pistachios**

**104.84 Acres**

## LOCATION

The subject property is located on the North side of Kimberlina Rd, 1 mile east of Highway 99. Approximate address is, 32686 Kimberlina Rd, McFarland, CA 93308.

## DESCRIPTION

This opportunity is 104.84 +/- acres on one parcel, with mature producing pistachios. The property has 2 sources of water; well water and non-contract District Water from Cawelo Water District. This ranch offers sustainable income and depreciation.

## PARCEL #'S

Kern County APN 073-220-05

## ZONING

A - Exclusive Agriculture

## CROPS

Approximately, 100.67 net acres of pistachios planted at 12' x 22' spacing. The pistachios were first planted in 1970 to Kerman on Atlantica rootstock. In 2005 and 2006 approximately 66% of the orchard was replanted to Kerman on Pioneer Gold rootstock. The last 4 years average production is 4,043 lbs/ac with 2023 at 5,475 lbs/ac, 2022 at 1,784 lbs/ac, 2021 at 4,173 lbs/ac and 2020 at 4,741 lbs/ac.

## SOIL

According to USDA California Revised Storie Index, mostly Grade 1 & 2 soils; see attached soils map for description.

## WATER & IRRIGATION

This ranch has a deep well with a 150 HP VFD that pumps approximately 780 GPM. The ranch also has a District outlet and receives non-contract water from Cawelo Water District as it is available. The trees are irrigated by the well or booster pump from the reservoir, through the sand media filters and a single line drip with 3 - 1 GPH emitters per tree.

## SGMA

The Sustainable Groundwater Management Act passed in 2014 requires groundwater basins be sustainable by 2040 and requires Groundwater Sustainability Plans (GSP) by 2020. GSPs may limit the amount of well water pumped.

For more information go to <https://water.ca.gov/Programs/Goundwater-Management/SGMA-Groundwater-Management>

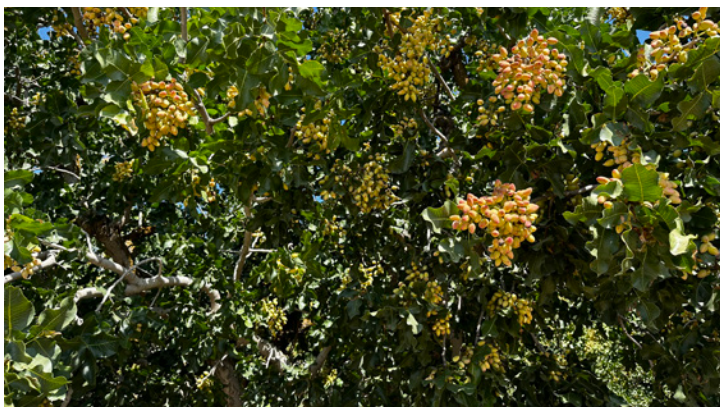
## PRICE/TERMS

\$3,774,240 (\$36,000/acre) cash at close of escrow.



# HOEKSTRA & ASSOCIATES, INC.

FARMLAND, COMMERCIAL, RESIDENTIAL REAL ESTATE





# HOEKSTRA & ASSOCIATES, INC.

FARMLAND, COMMERCIAL, RESIDENTIAL REAL ESTATE

## SOILS MAP



## CALIFORNIA REVISED STORIE INDEX (CA)

Map unit symbol	Map unit name	Rating	Component name (percent)	Acres in AOI	Percent of AOI
243	Wasco sandy loam	Grade 1 - Excellent	Wasco (85%)	105.7	100.0%
<b>Totals for Area of Interest</b>				<b>105.7</b>	<b>100.0%</b>

